

PRODUTTORI DI IMPIANTI AVICOLI
Productores de Poultry Equipment
Equipos Avícolas MANUFACTURERS
PRODUCTEURS D'ÉQUIPEMENTS
Производители AVICOLES
оборудования для птицеводства
مصنعي معدات الدواجن
鸡禽饲养设备
PRODUTORES 가금류 장비 제조업체
DE INSTALAÇÕES AVICULAS KÜMES
養鶏設備メーカー HAYVANLARI
EKİPMANI ÜRETİCİLERİ
ผู้ผลิตอุปกรณ์สำหรับการผลิตสัตว์ปีก



MADE IN ITALY

MODULO M - MEU Series

LAYING CAGE SYSTEM

Belt clean multi-tier system from 3 up to 12 tiers

www.valli-italy.com

info@valli-italy.com

+39.0543.975311



YouTube



WEB



in



quality you can rely on

... WELL PLANNED FOR A LONG LIFE

VALLI S.r.l.
Via Selva,14 - 47122 Forlì FC - ITALY

EN
Modulo - M-MEU - DE86496 - 20241023_S4

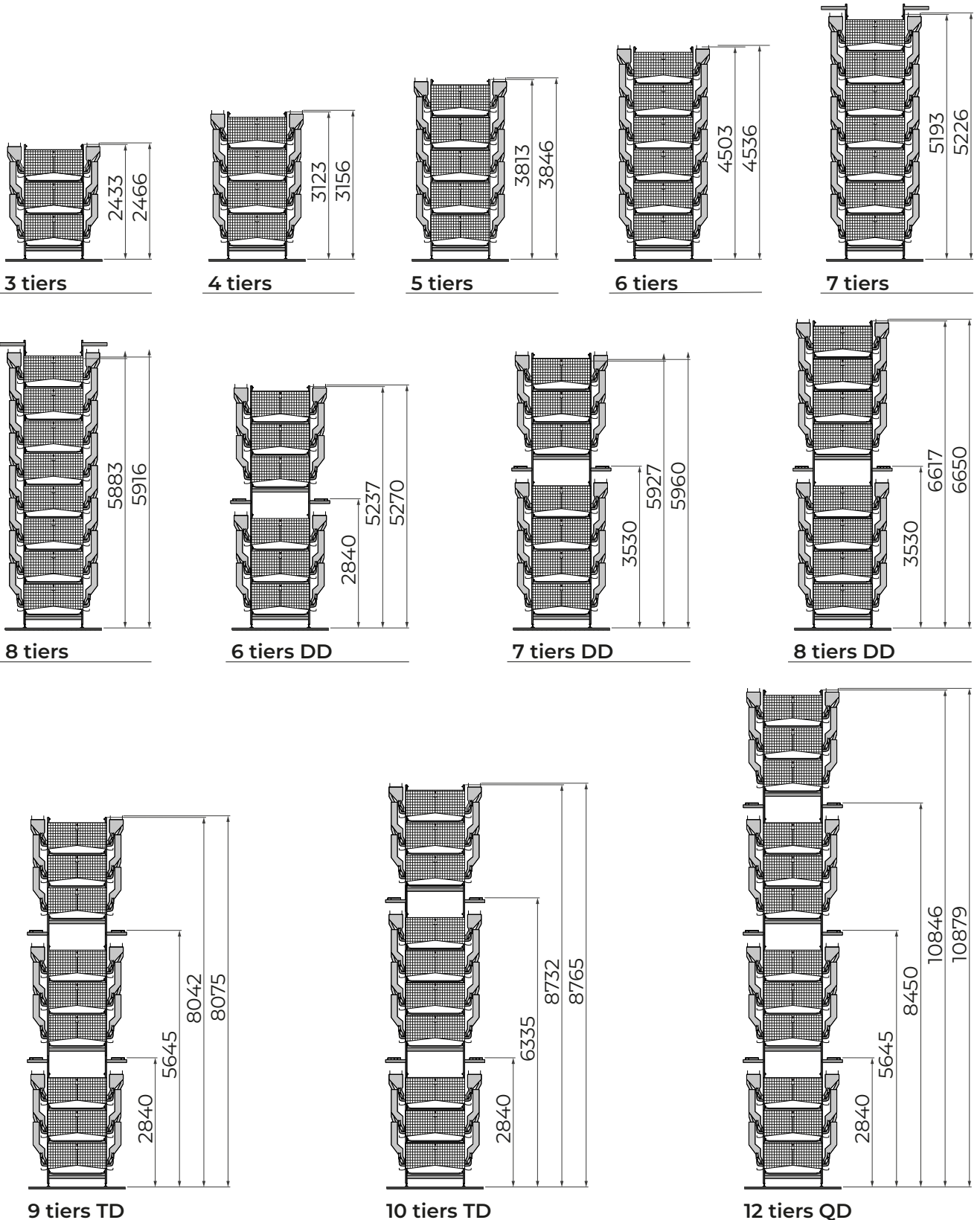


MODULO MEU ENRICHED

LAYING CAGE SYSTEM

Belt clean multi-tier system from 3 up to 12 tiers

Models	MEU	135	145	155	165
Overall width (trough/trough) mm		1650	1750	1850	1950
Overall width with travelling feeders mm		1966	2066	2166	2266
Floor slope	mm	7°	7°	7°	7°
Length of modular section	mm	2900 (support frame every 1450mm)			
Height tier to tier	mm	690	690	690	690



Heights are subject to decrease due to feet adjustment

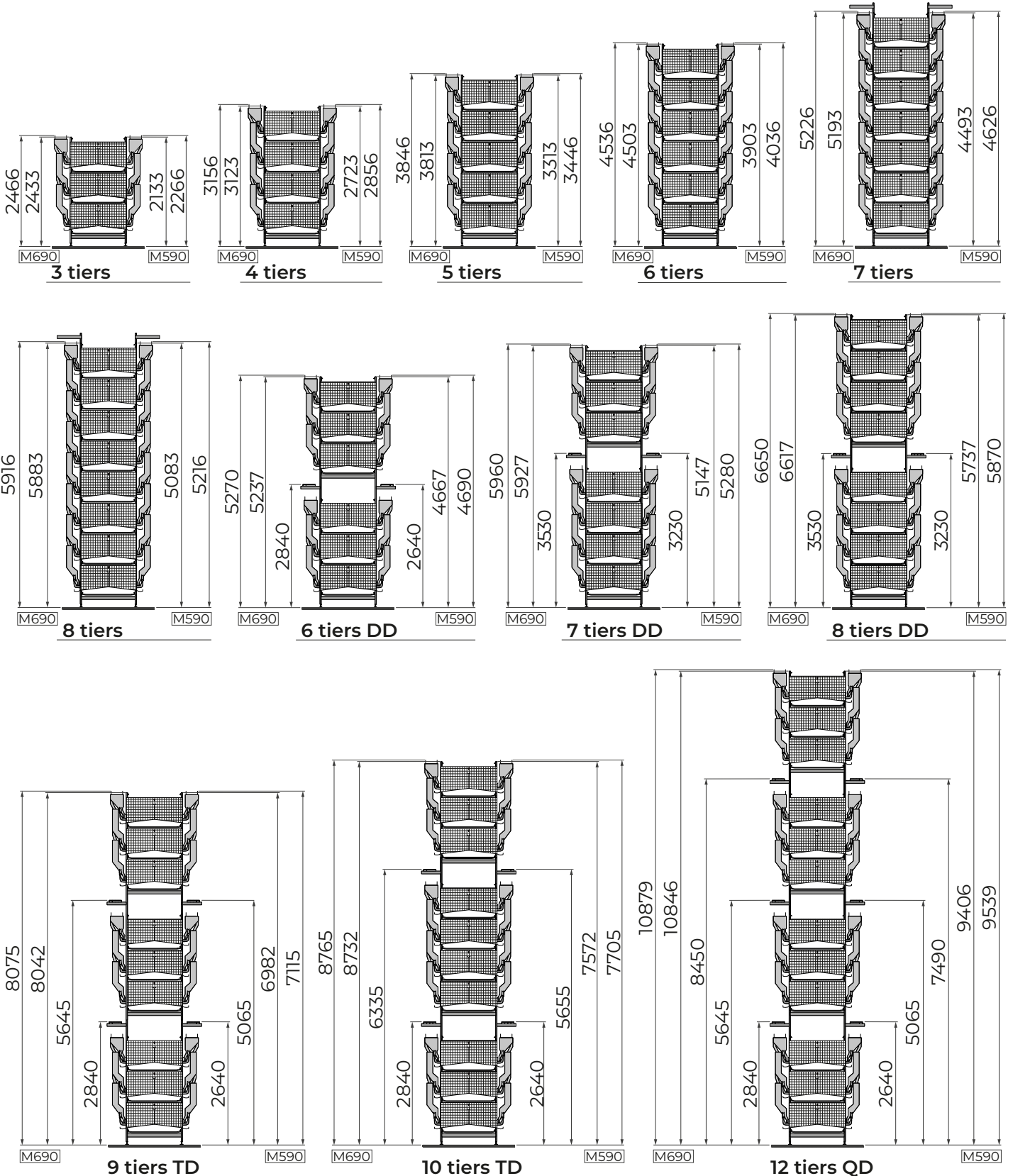
Valli should reserve the right to freely change models and technical specifications at any time without prior notice

MODULO M590 & M690

LAYING CAGE SYSTEM

Belt clean multi-tier system from 3 up to 12 tiers

Models	M	115	125	135	145	155	165
Overall width (trough/trough) mm		1450	1550	1650	1750	1850	1950
Overall width with travelling feeders mm		1766	1866	1966	2066	2166	2266
Floor slope mm		7°	7°	7°	7°	7°	7°
Length of modular section mm		2900 (support frame every 1450mm)					
Height tier to tier mm		590	590	590	-	-	-
Height tier to tier ENRICHABLE mm		-	-	690	690	690	690



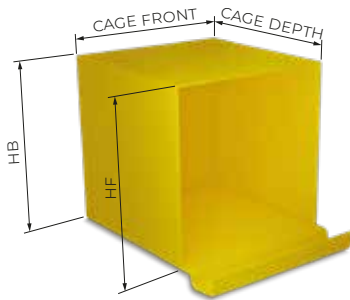
Heights are subject to decrease due to feet adjustment

Valli should reserve the right to freely change models and technical specifications at any time without prior notice

MODULO M - MEU

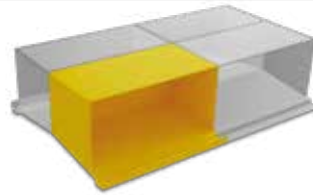
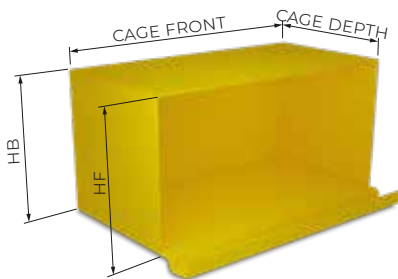
CAGE MODEL OVERVIEW

D8 CAGE PARTITION



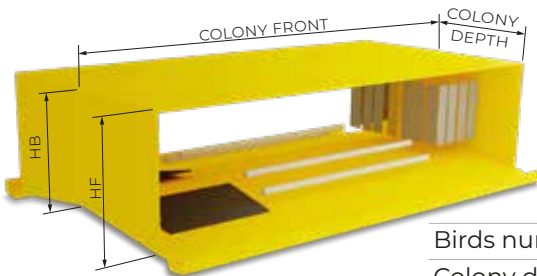
Models	M	M - 590			M - 690			
		115	125	135	135	145	155	165
Cage depth	mm	578	628	678	678	728	778	828
Cage front	mm	725	725	725	725	725	725	725
Cage floor surface	cm ²	4190	4553	4919	4893	4915	5640	6003
HB (Height at Back)	mm	400	390	380	480	470	460	450
HF (Height at Front)	mm	450	450	450	550	550	550	550

D4 CAGE PARTITION



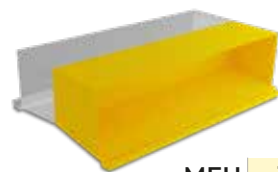
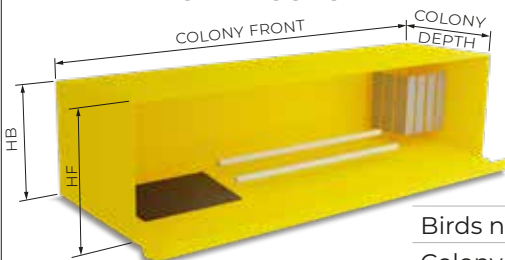
Models	M	M - 590			M - 690			
		115	125	135	135	145	155	165
Cage depth	mm	578	628	678	678	728	778	828
Cage front	mm	1450	1450	1450	1450	1450	1450	1450
Cage floor surface	cm ²	8381	9106	9831	9831	10556	11281	12006
HB (Height at Back)	mm	400	390	380	480	470	460	450
HF (Height at Front)	mm	450	450	450	550	550	550	550

ENRICHED COLONY



Models	MEU	135	145	155	165
Birds number (at 750cm ² /bird)		52	56	60	64
Colony depth ENRICHED	mm	1356	1456	1556	1656
Colony front ENRICHED	mm	2900	2900	2900	2900
Colony floor surface ENRICHED	cm ²	39324	42224	45124	48024
HB (Height at Back)	mm	480	470	460	450
HF (Height at Front)	mm	550	550	550	550

D2 ENRICHED COLONY



Models	MEU	135	145	155	165
Birds number (at 750cm ² /bird)	mm	26+26	28+28	30+30	32+32
Colony depth D2 ENRICHED	mm	678	728	778	828
Colony front D2 ENRICHED	cm ²	2900	2900	2900	2900
Colony floor surface D2 ENRICHED	mm	19662	21112	22562	24012
HB (Height at Back)	mm	480	470	460	450
HF (Height at Front)		550	550	550	550



- Overall dimension for optimized density
- New feed trough design with self-supporting profile
- Easy and quick installation
- Essential design reducing gaps for red mites
- Available in multi-tier configuration with intermediate catwalks
- Travelling feeders or flat chain feeding system
- Improved manure cleaning drive for easy maintenance
- Available with or without "pvc" duct for manure drying



Drinking line on each floor



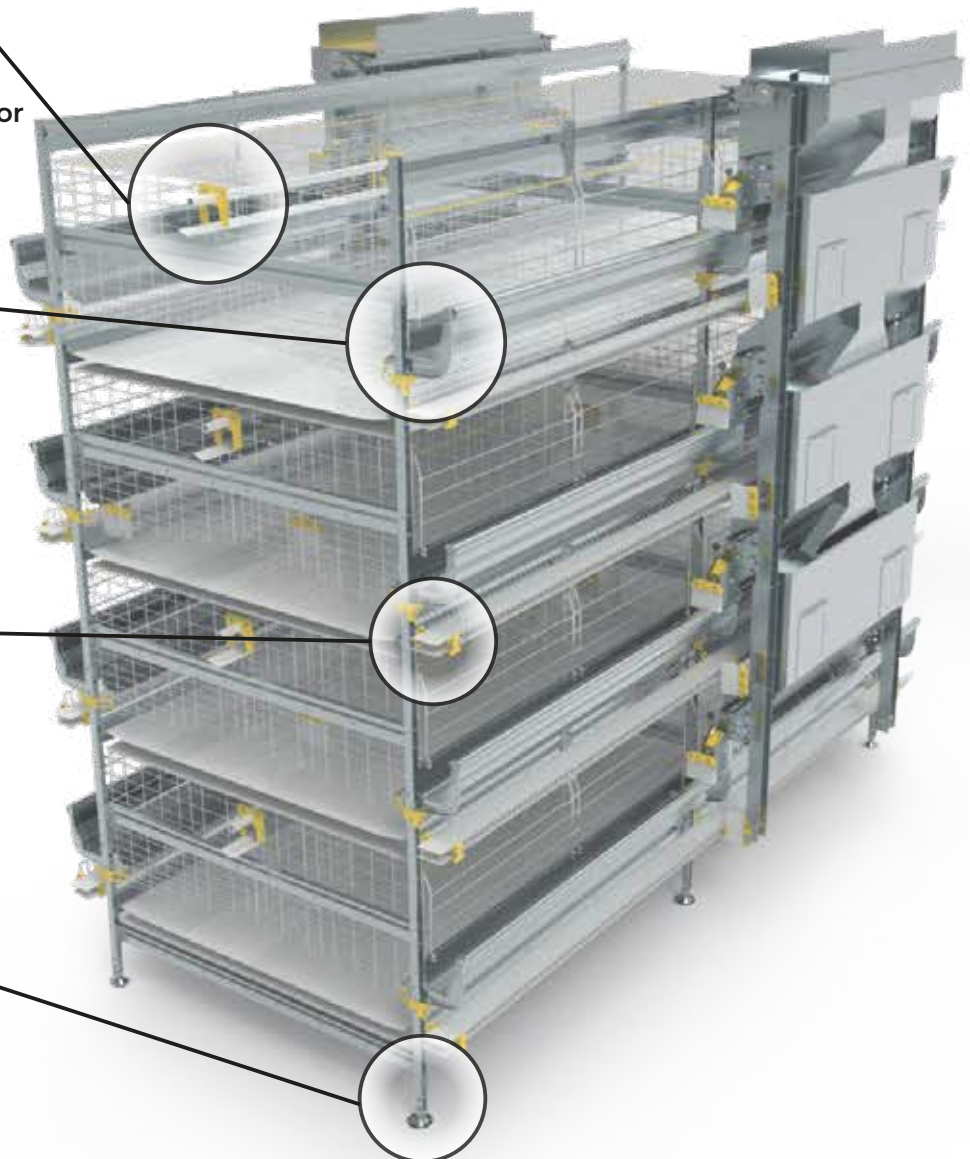
Self supporting feed troughs



EGG BELT 100 mm wide



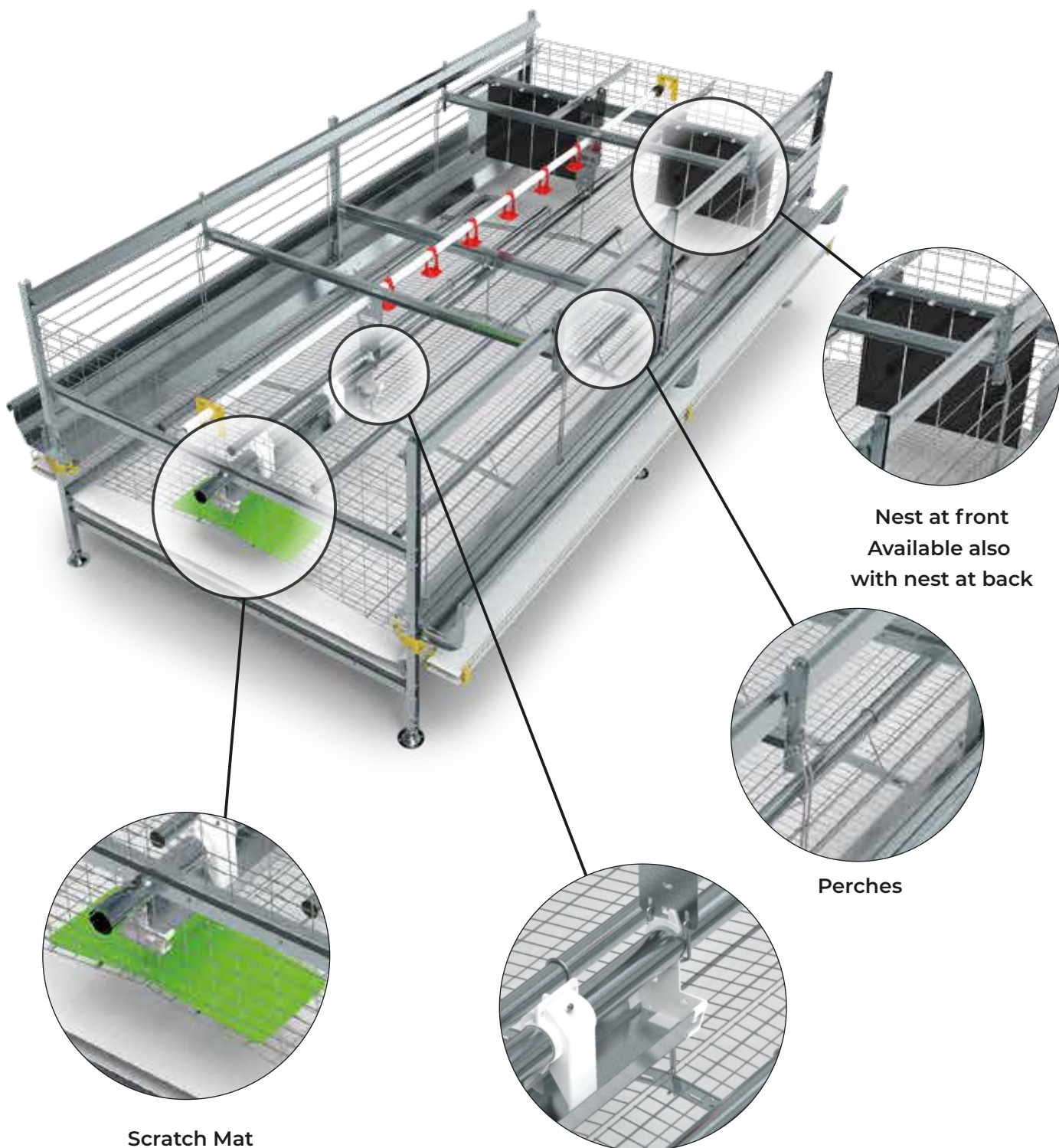
Adjustable feet





Care — Durability — Flexibility — Reliability — Service

MODULO MEU - ENRICHED



Nest at front
Available also
with nest at back

Perches

Scratch Mat

Additional central feeding system



EXCELLENCE IN POULTRY EQUIPMENT

VALLI S.r.l.
Via Selva,14 - 47122 Forlì FC - ITALY
www.valli-italy.com info@valli-italy.com